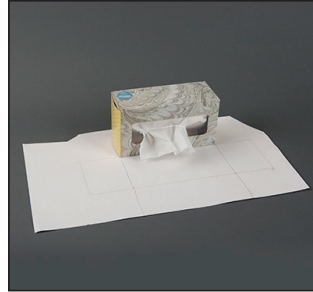


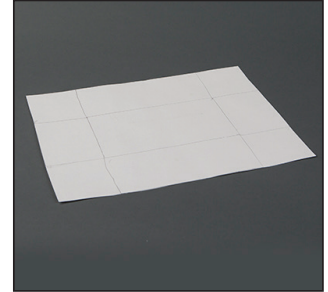
# Tissue Box Cover Instructions

**1.** To make the template, start by setting a tissue box upside down on a piece of poster board and tracing the rectangle.

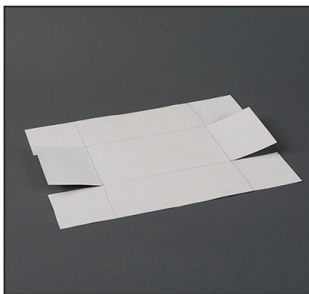


**2.** Flip the box up on each side and end right next to the rectangle, and trace each side to complete the template.

**3.** Cut out a rectangle around your whole tracing. Don't cut out the corners between the sides and ends of the tissue box.



**4.** Cut slits along both sides of each end piece.



**5.** Turn the template over and decorate it.

**6.** Cut out a wide slit in the top where the tissues will come out.

**7.** Cover the decorated side in clear contact paper, cutting along the slits.

**8.** Fold the entire template into the shape of a tissue box, using mailing tape to hold the corners together.

